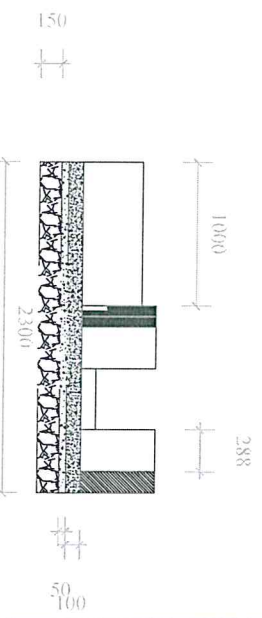
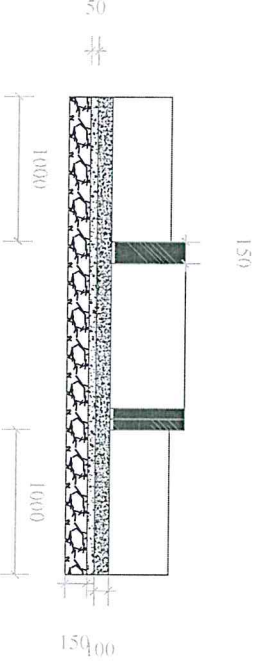
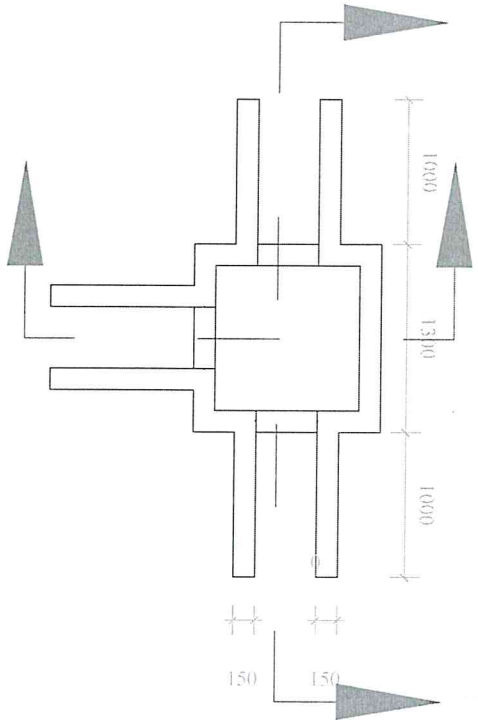


Njukini



- NOTES**
1. All dimensions in mm
  2. Ratio 1:2:4 in DB walls and slab
  3. Ratio 1:3:6 in blinding
  4. Use Bamburi cement
  5. Use machine granite ballast  $\frac{1}{2}''$  to  $3''$
  6. Use river Brown sand

**REPUBLIC OF KENYA  
MINISTRY OF WATER AND IRRIGATION  
IRRIGATION DEPARTMENT  
AND  
NATIONAL IRRIGATION BOARD**

**PROJECT NAME: NJUKINI IRRIGATION SCHEME**

**DIVISION BOX**

The Dimensions for openings are:  
Block A Main Canal Bm=Bg=0.5  
Block B Main Canal Bm=Bg=0.3

The height of DB will be height of canal plus 100mm above.

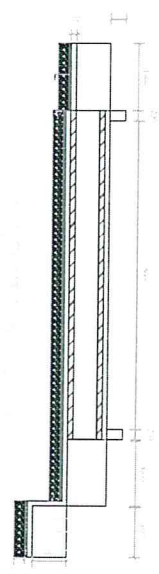
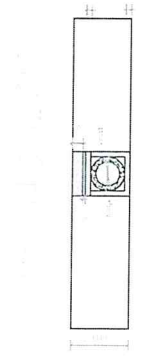
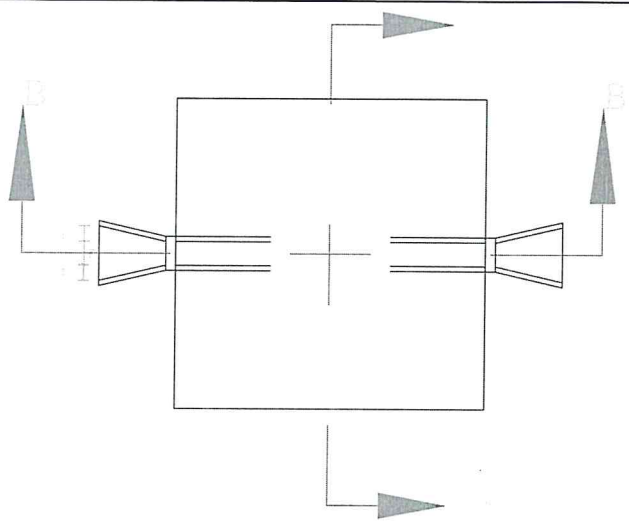
Designed by	R.K Mutiso
Drawn By	R.K Mutiso
Checked By	Eng. Ogendo
Approved By	Eng. Kanui
Scale	1:40
Drawing No	NJUKINI/DB/2 of 1

- NOTES**
1. All dimensions in mm
  2. Hardcore 200mm and screed 50mm at foundation
  3. Slab ratio 1:2:4
  4. Blinding ratio 1:3:6
  5. Side slopes of canal 2:1:1

**REPUBLIC OF KENYA**  
**MINISTRY OF AGRICULTURE**  
**LIVESTOCK FISHERIES AND**  
**IRRIGATION**  
**IRRIGATION DEPARTMENT**  
**AND**  
**NATIONAL IRRIGATION BOARD**

**PROJECT NAME: NJUKINI**  
**IRRIGATION SCHEME**

**RING CULVERT**  
 The positions of Culverts/Road crossings are as directed by the Engineer



Designed by	R.K Mutiso
Drawn By	R.K Mutiso
Checked By	
Approved By	
Scale	1:100
Drawing No	NJUKINI/CULVERT/2 of 1

- NOTE**
1. All dimensions in mm
  2. Canal walls made of blocks joined by mortar ratio 1:3 and plastered inside with ratio 1:3
  3. Slab ratio 1:2:4
  4. Binding ratio 1:3:6
  5. Use Boburi Cement
  6. Use Ballast granular size  $\frac{1}{2}$ " to  $\frac{3}{4}$ "

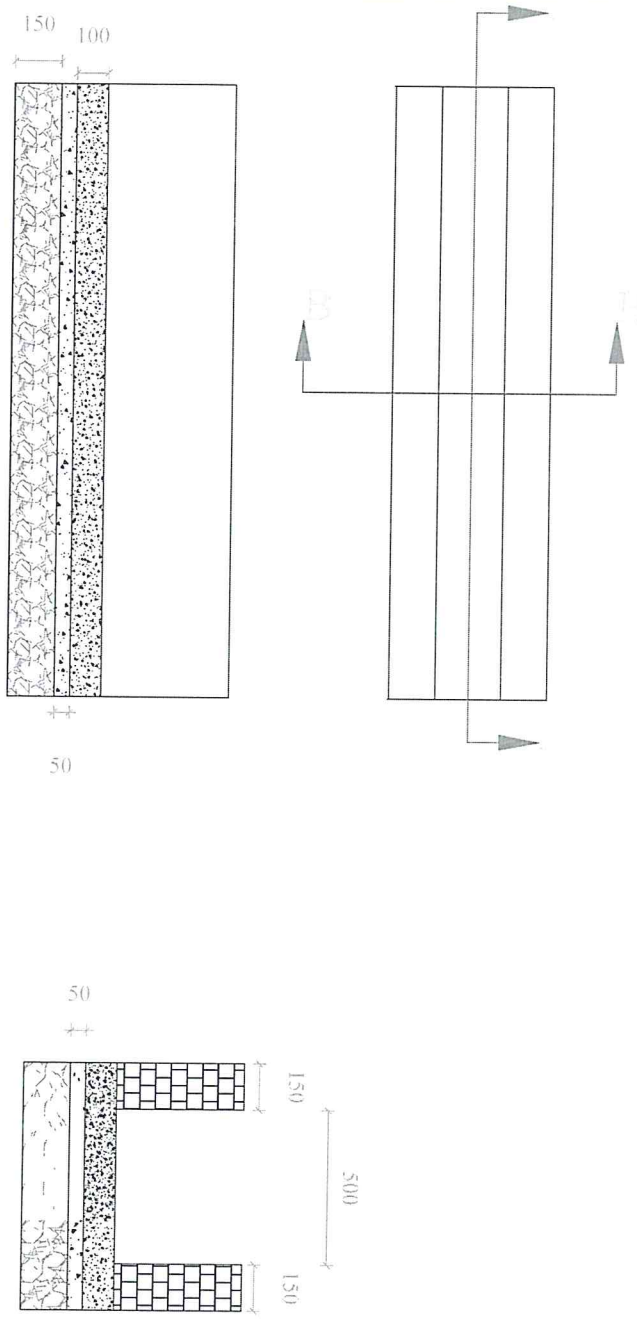
**REPUBLIC OF KENYA  
MINISTRY OF AGRICULTURE  
LIVESTOCK FISHERIES AND  
IRRIGATION  
IRRIGATION DEPARTMENT  
AND  
NATIONAL IRRIGATION BOARD**

**PROJECT NAME: NJUKINI  
IRRIGATION SCHEME**

**CANAL LINING**

**Dimensions**

Canal	bmm	Dmm
Lateral in A block A	500	500
Lateral in B Block B	400	500



Designed by	R.K Mutiso
Drawn By	R.K Mutiso
Checked By	
Approved By	
Scale	1:500
Drawing No	NJUKINI/CANAL/1 of 1